

# Crab fishery

## Quota allocation

### Snapshot: crab quota allocation

There will be three individual transferable quotas (ITQ) for the crab fishery:

- blue swimmer crab for all of Queensland (BC1).
- east coast mud crab (EC1)
- Gulf of Carpentaria mud crab (GC1)

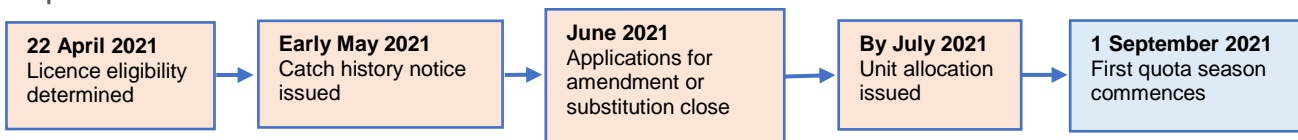
ITQ unit allocation will be based on your reported catch from the best six of seven financial years from 1 July 2010 to 30 June 2017.

### What you need to do

To be eligible for **ITQ**, you must have a C1 fishery symbol on your primary fishing boat licence on **22 April 2021** (it does not have to remain on the licence after this date).

You will need to **review the reported catch notice** we send you and, if relevant, follow the instructions to apply for an amendment or substitution by the date outlined in the notice.

### Important dates



### Catch history

Eligible licence holders will receive a notice of their reported catch for each prescribed year in May 2021.

If you believe there is an error in the details of your reported catch, you can apply for it to be amended. You will need to provide evidence of the error (such as original logbooks).

More information on this part of the process will be sent in early 2021.

### Catch caps

For mud crab, if you had two C1 symbols on your licence for any part of a prescribed year, a maximum of 12 tonnes can be counted towards your reported catch, as long as the two C1 symbols are on your licence on 22 April 2021. If you only had one C1 symbol on your licence for any part of a prescribed year, a maximum of 6 tonnes applies.

### Your quota

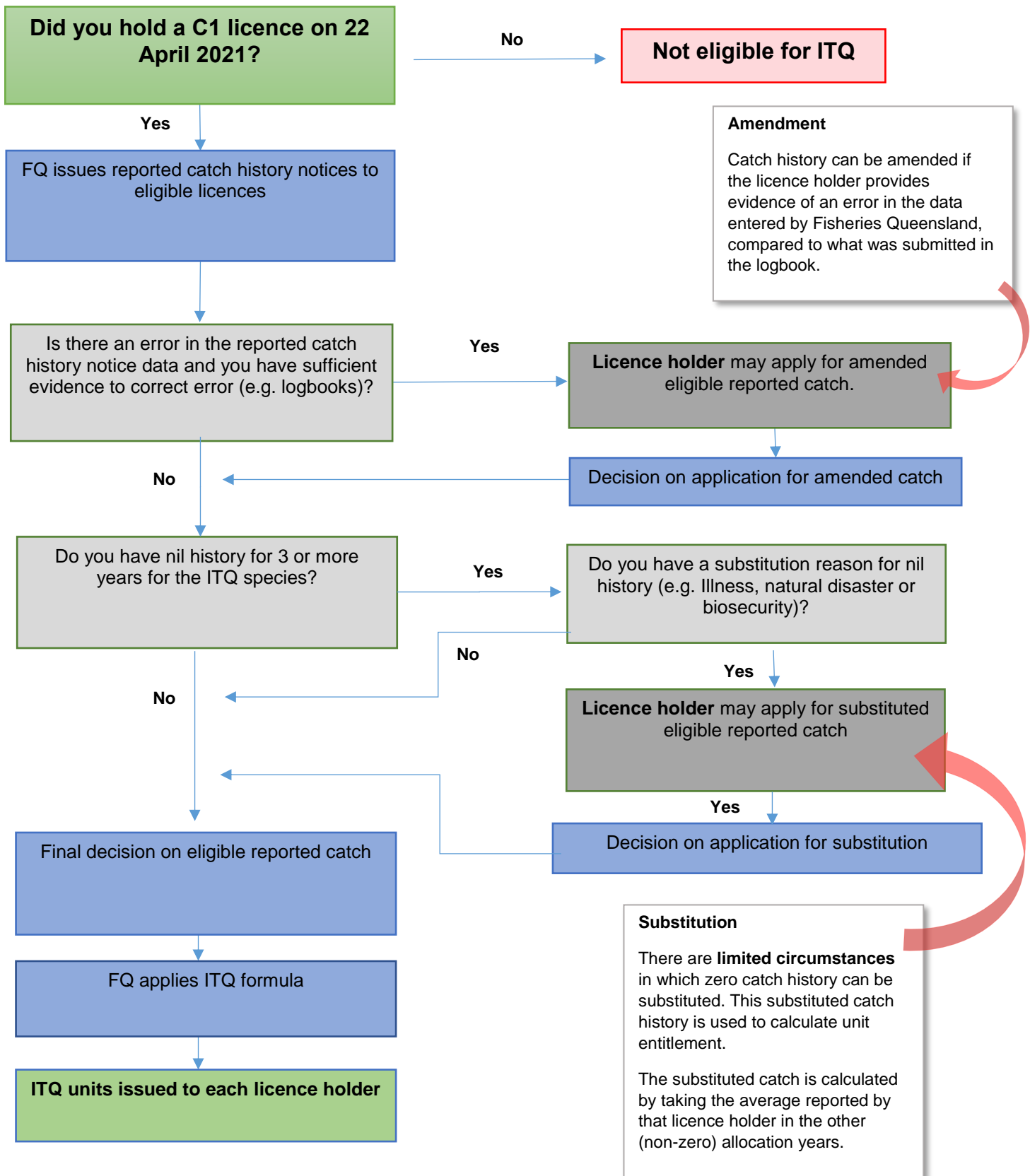
Your quota (entitlement to fish) is calculated by multiplying the number of fishery units you are allocated by the unit value for the fishery. The unit value is determined when the total allowable commercial catch (TACC) for the fishery is declared and the final number of units issued is finalised. Because the licences that will be eligible for ITQ units will not be known until after 22 April 2021, it is not possible to calculate your allocation ahead of this time.

$$\text{Individual catch quota 1 September 2021} = \text{Number of units} \times \text{Unit value (kg)}$$

\* Unit value (kg) = TACC ÷ number of available units

# Overview of allocation process

Your quota allocation is calculated using final reported, amended or substituted catch history.



## How the allocation is calculated

$$\text{Licence holder's number of units} = \frac{\text{Eligible licence holder's best catch} \times \text{Number of available units}}{\text{Sum of all eligible fishers' reported catch}}$$

Number of available units:  
BC1: 6750  
EC1: 29 600  
GC1: 2440

Every licence holder will be issued whole units rounded up.  
This may make the final number of units slightly higher than these numbers.

The **licence holders' number of units** is the number of units that will be allocated to you.

The **eligible licence holder's best catch** is calculated as your best six catch years reported from financial years 2010–11 to 2016–17.

The **number of available units** is specified for each fishery for calculating units. The final number issued at the completion of the process may be slightly higher.

The **sum of all eligible fishers' best catch** is calculated as the total of all licence holders' best six years catch reported from financial years 2010–11 to 2016–17. This can only be calculated on 21 July 2021, after the amendment and substitution process is complete.

### Example of quota unit allocation

A licence holder has reported east coast mud crab catch in the fishery across the reference years as follows.

	2010–11	2011–12	2012–13	2013–14	2014–15	2015–16	2016–17
East coast mud crab reported catch (kg)	7361	0	0	0	0	1452	1005
No. of C1 symbols	1	1	1	1	1	1	1
Maximum reported catch	6000	0	0	0	0	1452	1005
<b>Best 6 years</b>	<b>6000 + 1452 + 1005 = 8457 kg</b>						

The total of their best six years catch for allocation calculations would be 8457 kg.

$$\frac{8\,457 \times 29\,600 \text{ (EC1)}}{5\,000\,000 \text{ e.g. sum of all eligible fishers best catch}} = 51 \text{ units (rounded up)}$$

The total of their best six years catch would result in the allocation of 51 units of east coast mud crab.

### Applying for extra allocation

In some circumstances, you can apply to have one or two nil-reported catch years substituted with your average catch. The substituted catch number will replace the zero for calculating your unit allocation.

More information on this part of the process will be sent in early 2021.

## Substitution catch history

### STEP 1: Are you eligible for substitution reported catch?

Reported catch years	Eligible for substitution	Number of zero years that can be substituted
7 years of reported catch (0 zeros)	No	0
6 years of reported catch (1 zero)	No	0
5 years of reported catch (2 zeros)	No	0
4 years of reported catch (3 zeros)	Yes	1
3 years of reported catch (4 zeros)	Yes	2
2 years of reported catch (5 zeros)	Yes	2
1 year of reported catch (6 zeros)	Yes	2
0 years of reported catch (7 zeros)	Not eligible for any allocation	0

### STEP 2: Do you have a substitution reason?

Illness, natural disasters and biosecurity issues are the only circumstances in which you may be granted a substitution. To be eligible for reasons of illness, evidence must be produced and there must be no reported catch in any commercial fishery for the same period of time. To be eligible for reasons of natural disaster or a biosecurity issue, evidence must be produced.

### STEP 3: What will your substitution catch amount be?

If you are eligible for substituted catch, then the zero reported catch will be substituted with average catch. Your average catch will be calculated based on the other relevant years in which there is reported catch.

#### Example of quota unit allocation with substitution year

A licence holder has reported catch in the mud crab fishery and not fished in any other fishery. They provide medical evidence of a significant illness during 2014–15 that affected their ability to fish. The zero catch reported in 2014–15 can be replaced with their average from the other years during which they reported catch:  $(6000 + 1452 + 1005) \div 3 = 2819$  kg. This would increase their best six years total by 2819 kg.

	2010–11	2011–12	2012–13	2013–14	2014–15	2015–16	2016–17
East coast mud crab reported catch (kg)	7361	0	0	0	0	1452	1005
No. of C1 symbols	1	1	1	1	1	1	1
Reported catch	6000	0	0	0	0	1452	1005
With substitution	6000	0	0	0	2819	1452	1005
<b>Best 6 years total</b>	<b>Allocation using initial best 6 years catch = 8 457 kg</b>						
	<b>With substitution year = 11 276 kg</b>						

By having a higher best six years of catch, the licence holder will now receive a greater number of units than if their 2014–15 zero year had been used. This will convert into additional quota.

$$\begin{array}{r}
 11\,276 \text{ kg} \\
 \text{(best 6 years' catch)}
 \end{array}
 \times
 \begin{array}{r}
 29\,600 \\
 \text{(EC1 units available)}
 \end{array}
 =
 \begin{array}{r}
 67 \text{ units} \\
 \text{(rounded up)}
 \end{array}$$

$\frac{11\,276 \text{ kg}}{\text{e.g. sum of all eligible fishers best catch}}$

Had they provided evidence that they were unable to fish for two years due to illness, they may have been eligible for two substitution years, further increasing their allocation.

## Appeal process

Due to a recent amendment to the *Fisheries Act 1994*, the appeal process has changed. If you are not satisfied with the number of quota units allocated to you, you must seek an internal review of the departmental decision first. Following this review, if you are still not satisfied with the decision you can appeal to the Queensland Civil and Administrative Tribunal (QCAT).

More information on this part of the process will be sent in mid-2021.

## More information

For more information, visit [fisheries.qld.gov.au](https://fisheries.qld.gov.au), email [FisheriesManagers@daf.qld.gov.au](mailto:FisheriesManagers@daf.qld.gov.au) or call **13 25 23**.