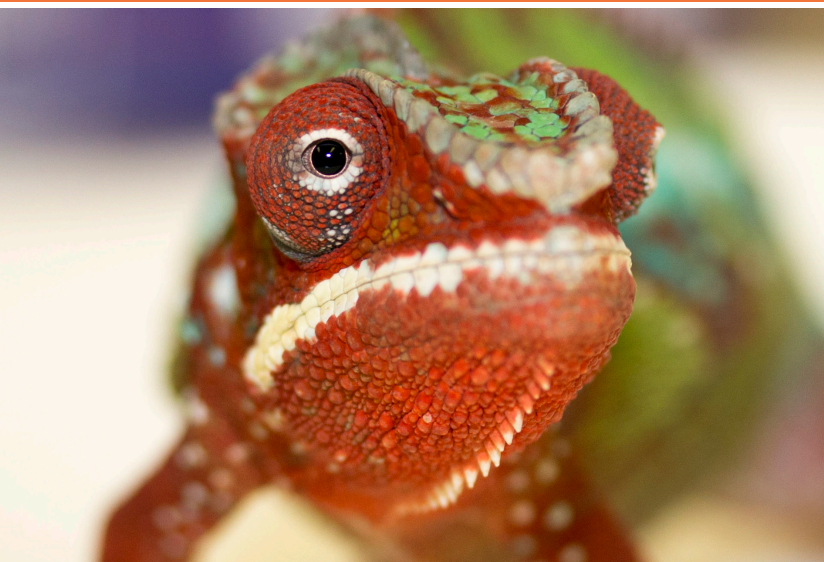


Chameleon

Prohibited invasive animal

Look. Report. Protect. 13 25 23



- It is illegal to import, keep, breed or sell chameleons in Queensland.
- They may carry and spread diseases to native reptiles.
- Colour and patterns may vary that can change rapidly.
- Can grow up to 25 cm long.
- Early detection and reporting helps protect Queensland's natural environment.

Description

The chameleon (family *Chamaeleonidae*) are attractive reptiles that can grow up to 25 cm long, however, some species can be as small as 20 mm or grow up to 70 cm long. Hands and feet have large toes to enable climbing. They vary in colour and patterns. Colours can range from dull greens and browns through to vibrant blues and reds. Their colour can change rapidly and can be influenced by light, temperature or the emotional state of an individual animal.

Chameleons have scaled-cone shaped eyes capable of moving independently of each other. They use their tails to wrap around objects to assist climbing. Some chameleons have small spikes along the spine; with spike sizes varying between species. They can have up to three long horns projecting forward on their head.

Biosecurity risk

The chameleon is a prohibited invasive animal under the *Biosecurity Act 2014*. Prohibited species must be reported immediately to Biosecurity Queensland on 13 25 23. You cannot keep a chameleon as a pet in Queensland. Penalties may apply.

Chameleons can spread diseases to our native reptiles and pose a threat to native species. They are vulnerable to a variety of parasites which can harm other animals, including humans. They are also difficult to eradicate due to their ability to change body colour to match their surroundings.

What should I do?

If you think you have seen a chameleon, report it immediately to Biosecurity Queensland on 13 25 23 or scan the QR code to access our reporting web page. Until an authorised officer contacts you, please take reasonable and practical steps to prevent the chameleon from escaping, such as shutting doors or windows to contain the animal.

More information

Contact Biosecurity Queensland on 13 25 23 or visit biosecurity.qld.gov.au.

