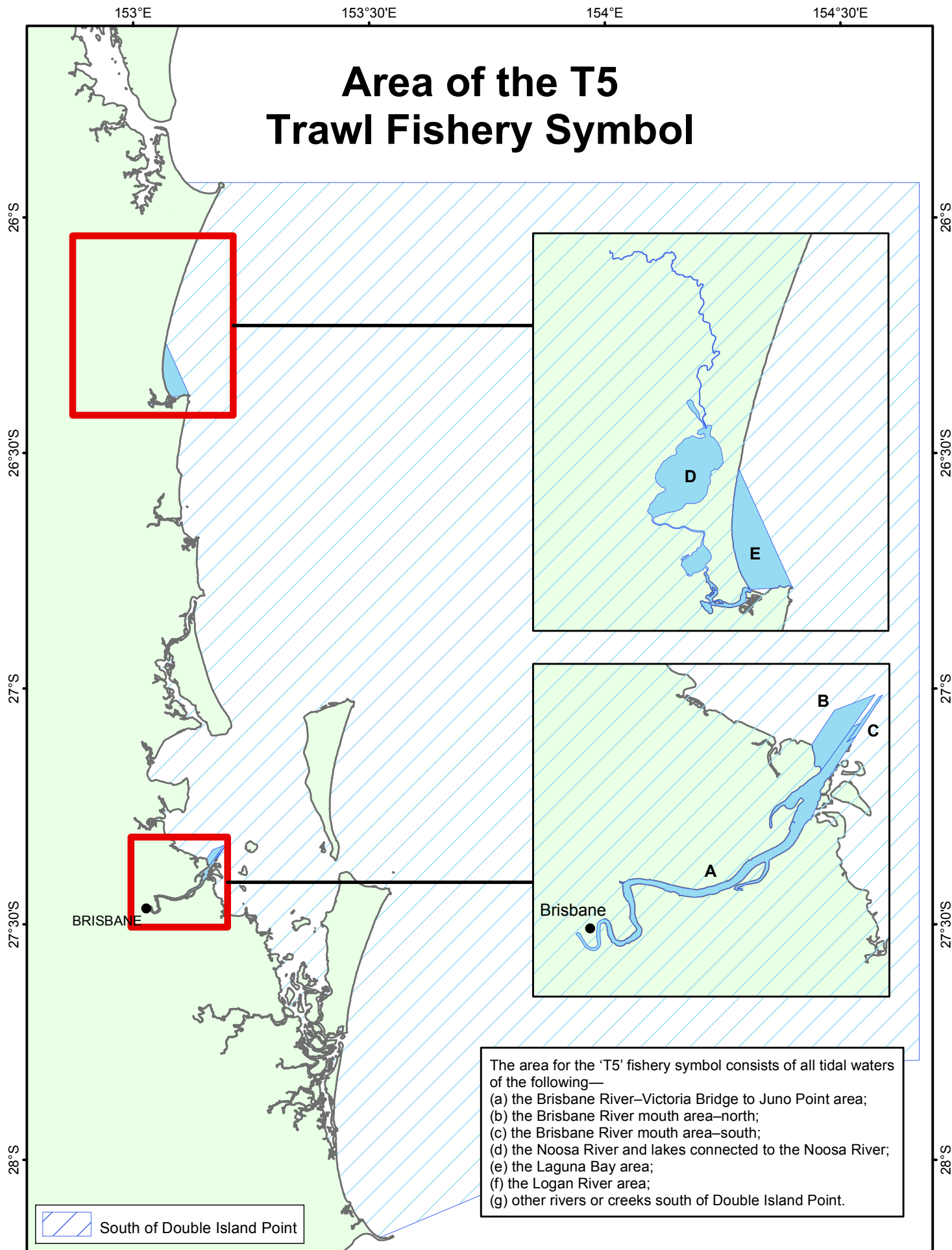


# Area of the T5 Trawl Fishery Symbol



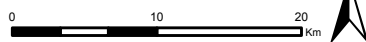
The area for the 'T5' fishery symbol consists of all tidal waters of the following—

- (a) the Brisbane River—Victoria Bridge to Juno Point area;
- (b) the Brisbane River mouth area—north;
- (c) the Brisbane River mouth area—south;
- (d) the Noosa River and lakes connected to the Noosa River;
- (e) the Laguna Bay area;
- (f) the Logan River area;
- (g) other rivers or creeks south of Double Island Point.



© State of Queensland 2015  
 Department of Agriculture  
 and Fisheries

Co-ord Sys: GCS GDA 1994  
 Datum: GDA 1994  
 Units: Degree



This map incorporates data which is: © Commonwealth of Australia (Geoscience Australia) 2011; and © Pitney Bowes Mapinfo. These datasets are licensed under the Creative Commons Attribution-NoDerivs 3.0 Australia License. To view a copy of this license, visit: <http://creativecommons.org/licenses/by/3.0/au/>

While every care is taken to ensure the accuracy of these data, all data custodians and/or the State of Queensland makes no representations or warranties about its accuracy, reliability, completeness or suitability for any particular purpose and disclaims all responsibility and all liability (including without limitation, liability in negligence) for all expenses, losses, damages (including indirect or consequential damage) and costs to which you might incur as a result of the data being inaccurate or incomplete in any way and for any reason.

**This map represents the approximate fishery area where fishing operations are permitted under the fishery symbol. Please refer to the relevant fisheries legislation (eg Regulation or Management Plan) for the exact boundaries of an area.**