

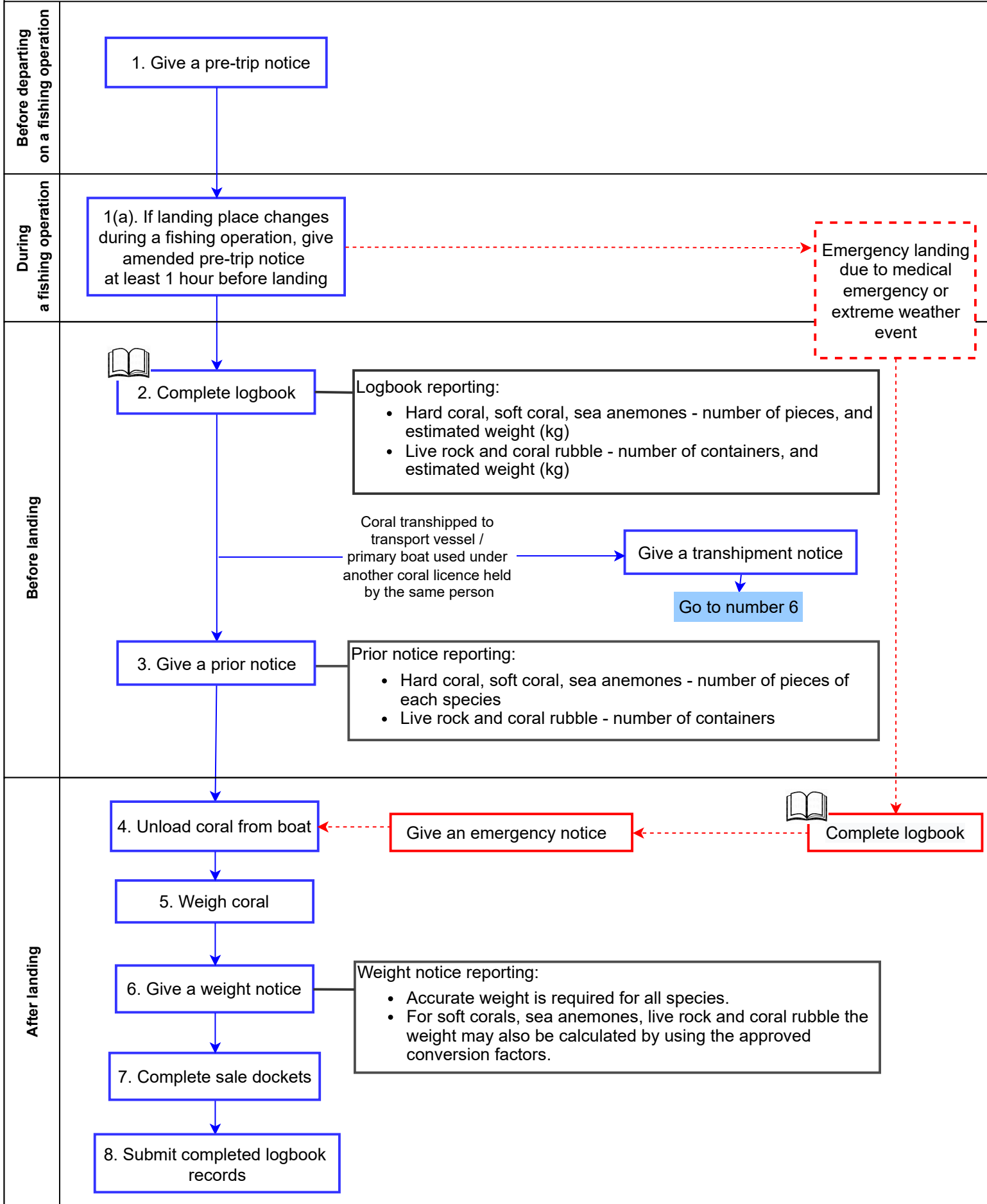
# Reporting requirements for coral fisher from 1 July 2022

Relevant fishery symbols: D

## Note:

- Refer to the reporting fact sheet for further details.
- All steps below (except step 7) and the associated reporting must be completed by the commercial fisher in control of the fishing operation.
- 'Species' in this diagram may indicate species or genus.

Version: 2.0 Date: 1 July 2022



Emergency landing due to medical emergency or extreme weather event