

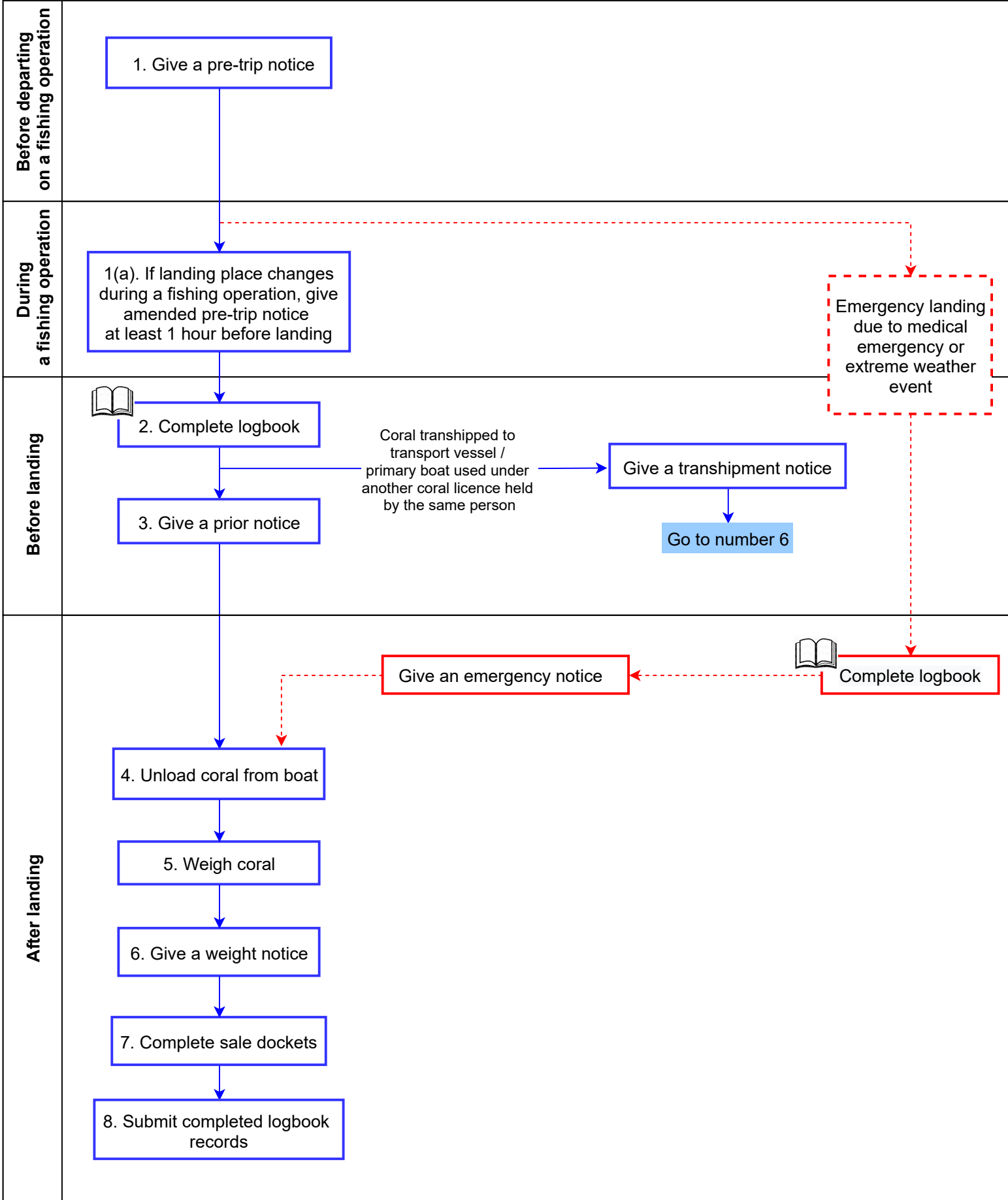
Reporting requirements for coral fishery from 1 September 2021

Relevant fishery symbols: D

Note:

- Refer to the reporting fact sheet for further details.
- All steps below (except step 7) and the associated reporting must be completed by the commercial fisher in control of the fishing operation.

Version: 1.0 Date: 5 July 2021



Emergency landing due to medical emergency or extreme weather event