

HOMESTEAD

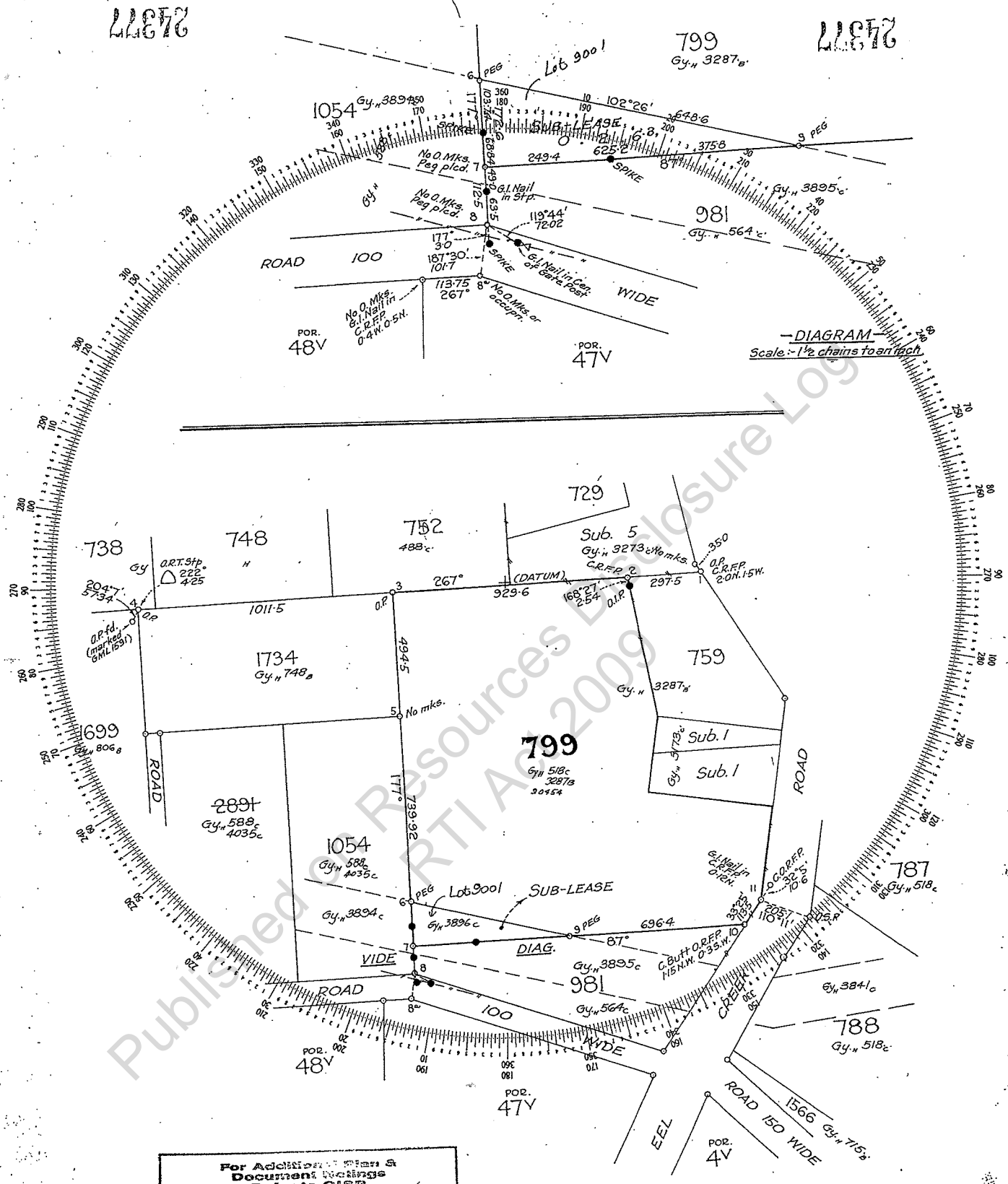
33
of
71

GYMPIE

3841 to 3900

H

3841	24336	3861	24356	3881	24367
3842	24337	3862	24357	3882	07082
3843	24338	3863	07073	3883	09376
3844	24339	3864	07074	3884	07083
3845	24340	3865	24358	3885	24368
3846	24341	3866	24359	3886	24369
3847	24342	3867	24360	3887	24370
3848	24343	3868	24361	3888	07084
3849	24344	3869	24362	3889	24371
3850	24345	3870	24363	3890	07085
3851	24346	3871	24364	3891	24372
3852	24347	3872	07075	3892	24373
3853	24348	3873	07076	3893	24374
3854	24349	3874	07077	3894	24375
3855	24350	3875	07078	3895	24376
3856	24351	3876	07079	3896	24377
3857	24352	3877	24365	3897	07086
3858	24353	3878	07080	3898	07087
3859	24354	3879	24366	3899	07088
3860	24355	3880	07081	3900	07089



For Additional Plans & Document Holdings Refer to CISP

Locality.....

I hereby certify, on honour, that this survey has been carried out with the theodolite and was completed on 22.6.68 and that the boundaries shown on the diagram accord with those marked and defined on the ground.

24377

s.73 Irrelevant information AUTH. S.M. Meyer.

SCALE 3 CHAINS TO AN INCH.

8. 2. 66

EXAMINED BY	E.C.C.	26.1.68	DUPLICATE TO WARDEN	8.2.68
CHARTED BY	R.H.	1.2.68	FIELD BOOK BOX No.	

SURVEY OF

Sub Lease of Part of
MHL 799

PARISH OF Waonga
COUNTY OF Lennox
WARDENS DISTRICT OF Gympie

24377

Gy 3896
H

