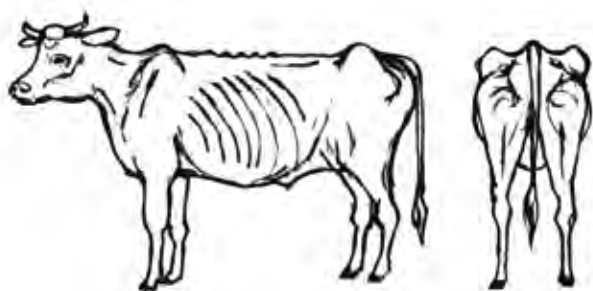
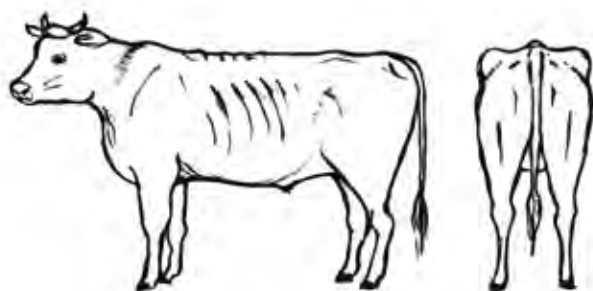


# Cattle body condition scoring



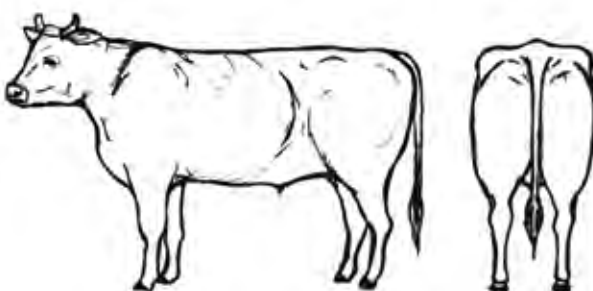
## Condition score 1

Backbone prominent  
Hips and shoulder bones prominent  
Ribs clearly visible  
Tail-head area recessed  
Skeletal body outline



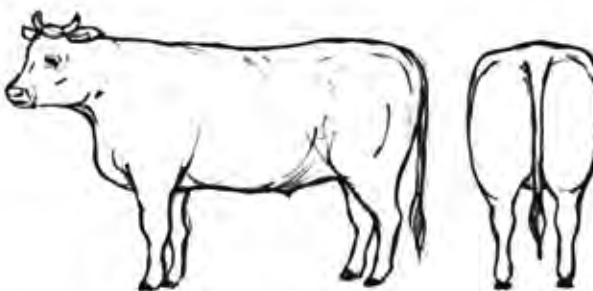
## Condition score 2

Backbone visible  
Hips and shoulder bones visible  
Ribs visible faintly  
Tail-head area slightly recessed  
Body outline bony



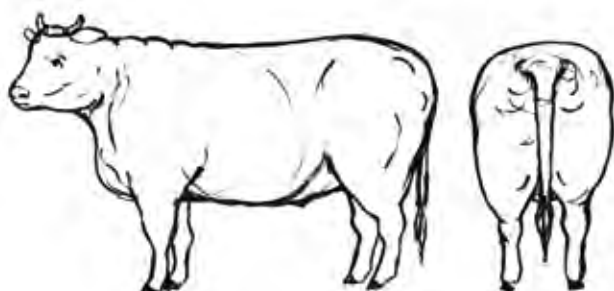
## Condition score 3

Hip bones visible faintly  
Ribs generally not visible  
Tail-head area not recessed  
Body outline almost smooth



## Condition score 4

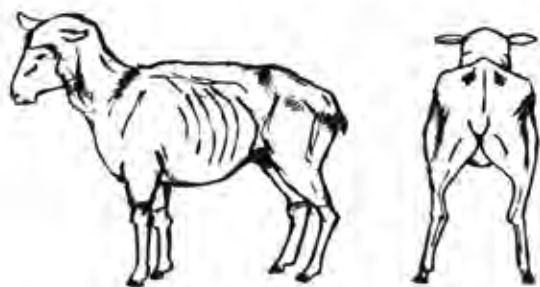
Hip bones not visible  
Ribs well covered  
Tail-head area slightly lumpy  
Body outline rounded



## Condition score 5

Hip bones showing fat deposit  
Ribs very well covered  
Tail-head area very lumpy  
Body outline bulging due to fat

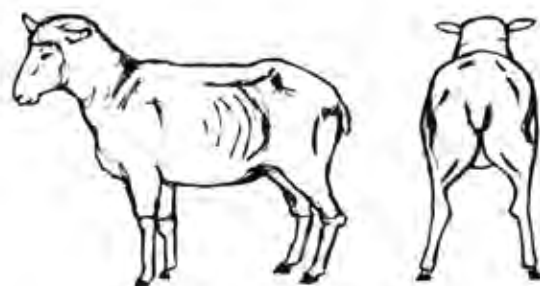
# Sheep body condition scoring



## Condition score 1

Appearance angular and narrow  
Backbone raised and sharp  
Hollow behind ribs  
Tail feels bony  
Neck bones prominent

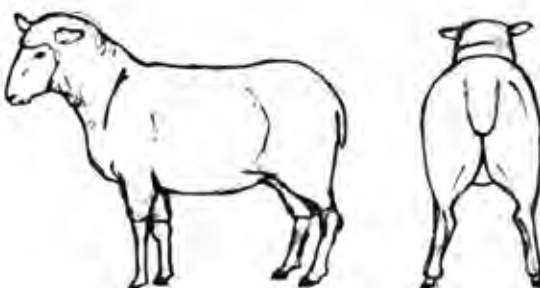
---



## Condition score 2

Backbone raised but smooth  
Ribs are easily felt  
Tail bone easily detectable  
Thin neck

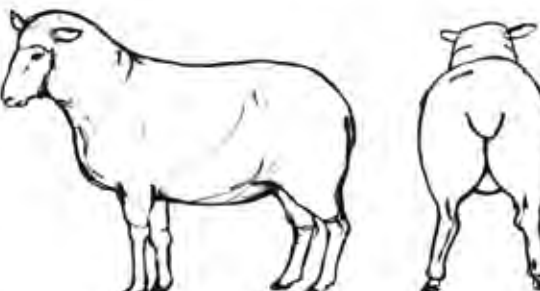
---



## Condition score 3

Backbone slightly raised  
Ribs smooth, can just be felt  
Tail bones barely detectable

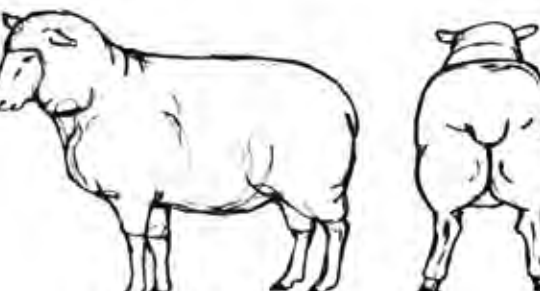
---



## Condition score 4

Appearance well rounded  
Backbone can just be felt  
Ribs are covered  
Tail firm and rounded

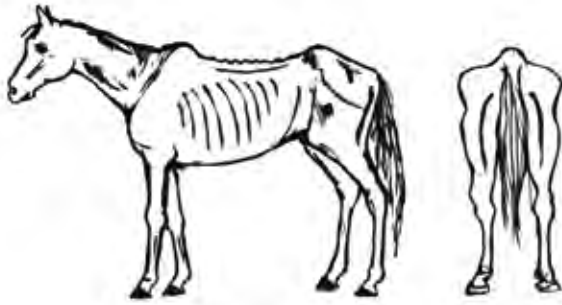
---



## Condition score 5

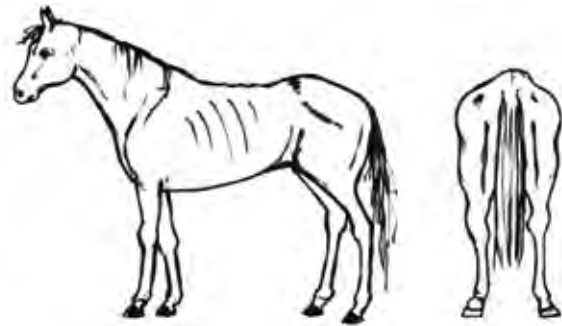
Appearance very well rounded  
Backbone barely detectable  
Ribs cannot be felt  
Tail fat and broad

# Horse body condition scoring



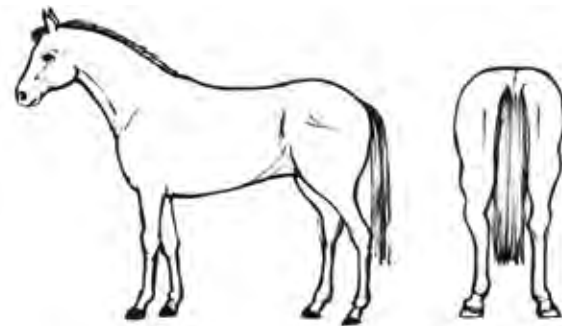
## Condition score 1

Sunken rump  
Prominent poverty line in hind quarters  
Cavity under tail  
Ribs prominent  
Prominent backbone and croup  
Ewe neck, narrow and slack



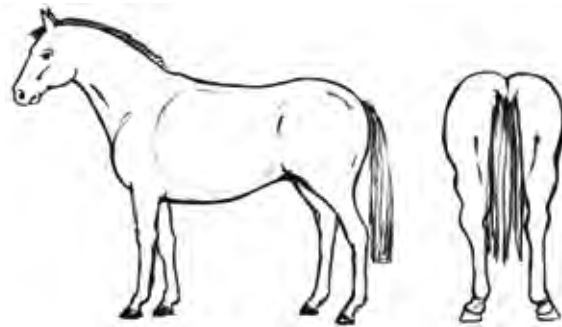
## Condition score 2

Flat rump on either side of backbone  
Poverty line still visible  
Ribs just visible  
Narrow but firm neck  
Backbone covered



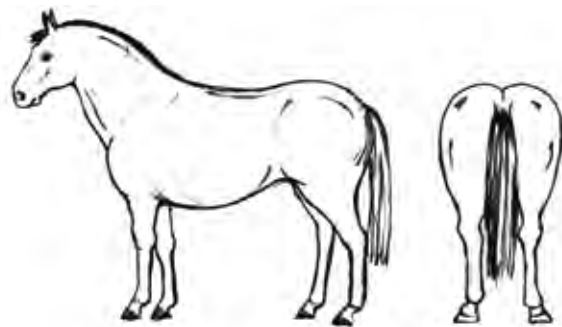
## Condition score 3

Rounded rump  
Ribs just covered but easily felt  
No crest, firm neck



## Condition score 4

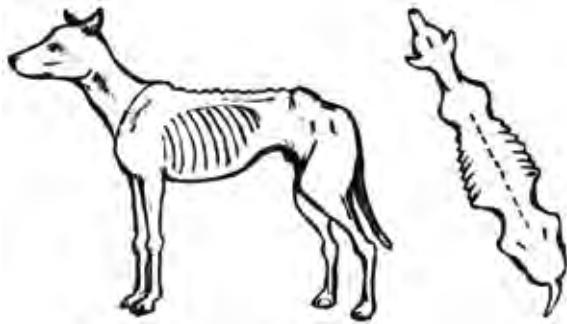
Well-rounded rump  
Gutter along back  
Ribs and pelvis hard to feel  
Slight crest on neck



## Condition score 5

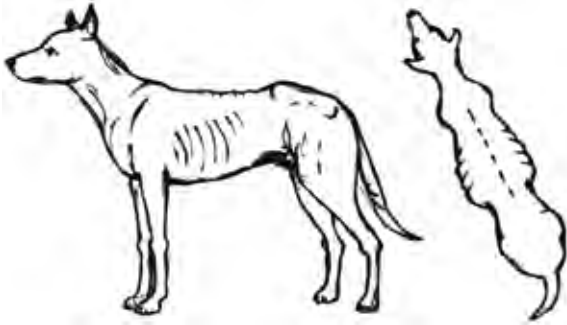
Very bulging rump  
Deep gutter along back  
Ribs buried  
Marked crest on neck  
Folds and lumps of fat

# Dog body condition scoring



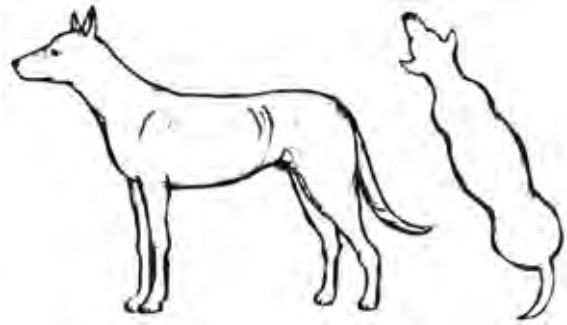
## Condition score 1

Ribs, spine and pelvis prominent  
Hollow rump  
Prominent waist when viewed from above  
Severely tucked up abdomen  
Neck thin and bony  
Sunken eyes



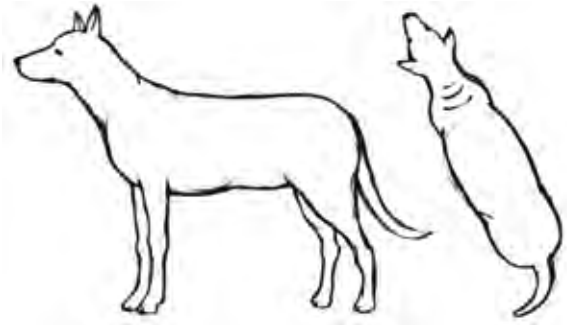
## Condition score 2

Ribs, spine and pelvis visible  
Abdomen tucked up  
Obvious waist when viewed from above  
Neck thin



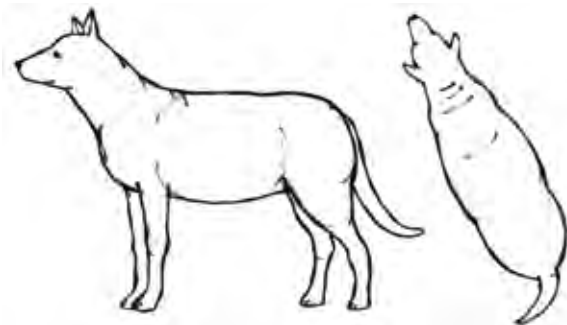
## Condition score 3

Ribs and spine can be felt  
Rounded rump  
Dog should have a waist when viewed from above  
Good muscle mass



## Condition score 4

Ribs and spine not visible but can be felt  
Fat deposit on tail  
Little or no waist when viewed from above  
Abdomen appears slightly rounded



## Condition score 5

Ribs and spine not visible and difficult to feel  
Tail has obvious fat deposit  
No waist and back broadened  
Abdomen rounded and possibly distended  
Obvious fat deposits